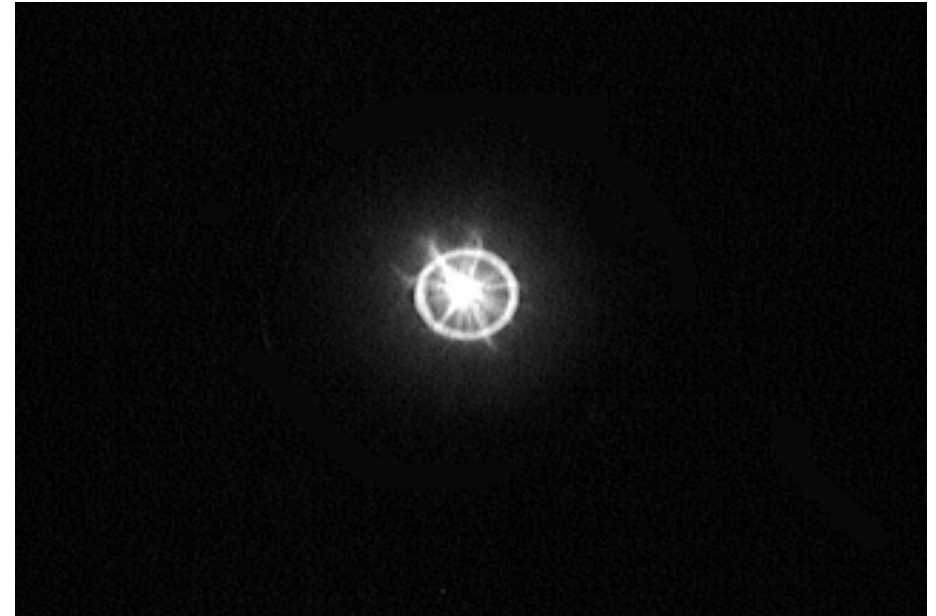
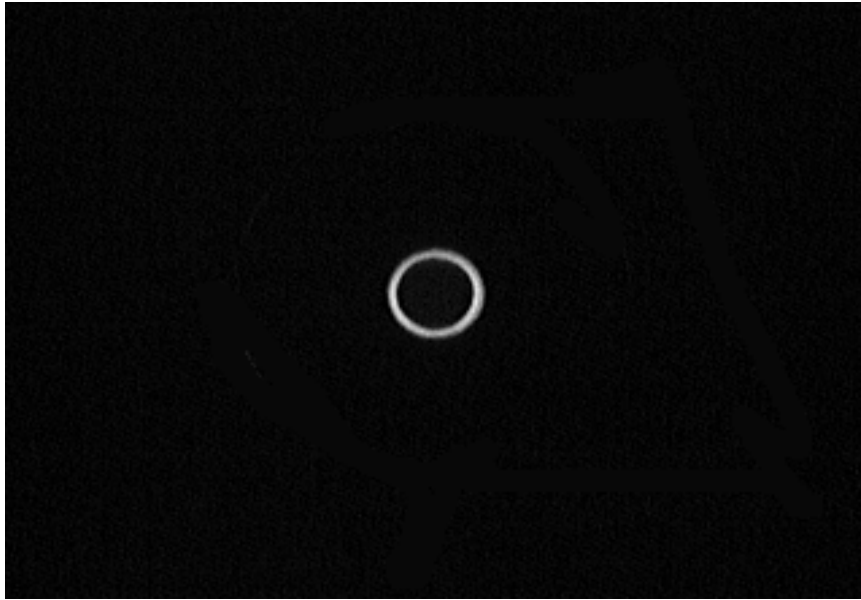


Test Results of BioEnergetic Charge* of *BIOPRO BioProduce*
(Comparison of Before and After BIOPRO'S Energy Resonance Technology (ERT) Charging Process)



BEFORE BEING CHARGED WITH BIOPRO'S **ERT** | **AFTER** BEING CHARGED WITH BIOPRO'S **ERT**

*The above testing was conducted on August 17, 2005 by a PhD in Pharmacology and Toxicology from the Indiana University School of Medicine, using a Gas Discharge Visualization Camera (GDV) and imaging device. The GDV is a widely used medical diagnostic instrument from Russia that measures biophoton emission of substances and humans. Biophoton emission is an indication of the energy contained in a substance or transferred to a human. **As the "AFTER" image (above right) illustrates, BIOPRO'S Energy Resonance Technology (ERT) has a significant energy-boosting impact on the nutritional product 'charged' by it.**